

NOTES:

- TRACT NO. 3883 IS A MAP OF A "PROJECT" AS THE TERM IS DEFINED IN SECTION 1350 (3) OF THE CIVIL CODE OF THE STATE OF CALIFORNIA, AND SUBDIVISION DEPICTED HEREON IS SUBJECT TO THE PROVISIONS OF THE CALIFORNIA CONDOMINIUM ACT, TITLE 6, PART IV, DIVISION 2, OF THE CIVIL CODE OF THE STATE OF CALIFORNIA.
- TRACT 3883 IS A RESUBDIVISION OF A PORTION OF LOT 24, SECTION 11, TOWNSHIP 2 SOUTH, RANGE 4 WEST, MOUNT DIABLO BASE AND MERIDIAN, AS SHOWN ON "MAP NO. 2 OF SALT MARSH AND TIDE LANDS, SITUATED IN THE COUNTY OF ALAMEDA, STATE OF CALIFORNIA", FILED IN THE OFFICE OF THE TIDE LAND COMMISSIONER IN THE CITY AND COUNTY OF SAN FRANCISCO, STATE OF CALIFORNIA AND LOTS 31, 32 AND A PORTION OF 138, "MAP OF TEUTONIA PARK AND HOMESTEAD ASSOCIATION OF ALAMEDA", FILED MARCH 10, 1877 IN BOOK 5 OF MAPS, PAGE 5, ALAMEDA COUNTY RECORDS, INTO CONDOMINIUM UNITS NUMBERED 1 THROUGH 76 AND COMMON AREA LOTS 77 AND 78.
- DIMENSIONS OF EACH CONDOMINIUM UNIT, PATIO, BALCONY, GARAGE AND PARKING SPACE ARE APPROXIMATE, AS PROVIDED FOR IN SECTION 1361 OF THE CIVIL CODE OF THE STATE OF CALIFORNIA.
- THE BOUNDARY LINES OF EACH CONDOMINIUM UNIT, SUBJECT TO MORE SPECIFIC DESCRIPTION SET FORTH HEREIN, ARE THE INTERIOR UNFINISHED SURFACES (EXCLUSIVE OF PAINT, PAPER, WAX, TILE, ENAMEL, OR OTHER FINISHING) OF ITS CEILINGS, FLOORS, PERIMETER WALLS, WINDOWS AND WINDOW FRAMES, DOORS AND DOOR FRAMES, AND TRIM, AND THE EXTERIOR AND/OR THE EXPOSED SURFACES OF THE FIREPLACE (EXCLUDING THE FLUE), AND INCLUDING BOTH THE PORTIONS OF THE SUBDIVIDED PROPERTY SO DESCRIBED AND THE AIR SPACES SO ENCOMPASSED, BUT EXCLUDING ALL BEARING WALLS AND ALL WALLS CONTAINING ANY UTILITY CONDUIT TO THE UNFINISHED SURFACES OF ANY SUCH WALL, WHICH WALLS WITHIN ANY GIVEN UNIT ARE PART OF THE COMMON AREA WITH RIGHT OF ACCESS FOR MAINTENANCE, REPAIRS, CONSTRUCTION OR PAINTING.
- THE BOUNDARY LINES FOR EACH PATIO UNIT ARE THE EXTERIOR FINISHED SURFACE OF THE PERIMETER WALLS ABUTTING SAID PATIO, THE INTERIOR UNFINISHED SURFACE OF THE FENCES, THE FINISHED GROUND SURFACE AND THE INTERIOR FINISHED SURFACE EXTENDED FROM THE CEILING OF THE CORRESPONDINGLY NUMBERED CONDOMINIUM UNIT AND ALL THE AIR SPACE ENCOMPASSED THEREIN.
- THE BOUNDARY LINES OF EACH BALCONY ARE THE INTERIOR FINISHED SURFACE OF THE RAILINGS THEREOF, THE EXTERIOR FINISHED SURFACE OF THE PERIMETER WALLS ABUTTING SAID BALCONY, THE UNFINISHED SURFACE OF THE FLOOR AND THE INTERIOR FINISHED SURFACE EXTENDED FROM THE CEILING OF THE CORRESPONDINGLY NUMBERED CONDOMINIUM UNIT AND ALL THE AIR SPACE ENCOMPASSED THEREIN.
- THE BOUNDARY LINES OF EACH GARAGE ARE THE INTERIOR UNFINISHED SURFACE OF THE PERIMETER WALLS THEREOF, THE INTERIOR UNFINISHED SURFACE OF THE FLOOR AND THE INTERIOR UNFINISHED SURFACE OF THE CEILING AND ALL OF THE AIR SPACE ENCOMPASSED THEREIN.
- THE BOUNDARY LINES OF THE NUMBERED PARKING SPACES SHALL BE THE FINISHED SURFACE OF THE PAVEMENT AND THE AIR SPACE ENCOMPASSED THEREBY, BOUNDED ON FOUR SIDES BY PLANES EXTENDED VERTICALLY FROM EACH OF THE FOUR EDGES OF THE PARKING SPACE. THE UPPER BOUNDARY OF EACH SUCH PARKING SPACE SHALL BE A GENERALLY HORIZONTAL PLANE SURFACE OF UNIFORM DISTANCE OF SEVEN FEET ABOVE THE PAVEMENT OF SUCH PARKING SPACE SO ENCOMPASSED. THE EXCLUSIVE USE OF EACH NUMBERED PARKING SPACE IS RESERVED TO THE OWNER OF THE CORRESPONDINGLY NUMBERED CONDOMINIUM UNIT.
- COMMON AREA SHALL BE ALL LANDS AND ALL PORTIONS OF THE PROJECT NOT A PART OF ANY CONDOMINIUM UNIT, INCLUDING WITHOUT LIMITATION, BALCONIES, WIRES AND OTHER UTILITY INSTALLATION TO THE OUTLETS, BEARING WALLS, WALLS CONTAINING UTILITIES CONDUIT, AND COLUMNS AND GIRDERS TO THE UNFINISHED SURFACES THEREOF, REGARDLESS OF LOCATION WITHIN AN INCREMENT OF THIS PROJECT, FOR ONLY THE INCREMENT, OR INCREMENTS, FOR WHICH A DECLARATION OF INTENT TO DEVELOP SHALL HAVE BEEN FILED IN ALAMEDA COUNTY OFFICIAL RECORDS, SHALL CONSTITUTE THE COMMON AREA. THE OWNER OF EACH CONDOMINIUM UNIT SHALL OWN AN UNDIVIDED INTEREST IN THE COMMON AREA.

SOILS REPORT FOR TRACT 3883 WAS PREPARED JUNE 14, 1977 BY HALLENBECK, MCKAY & ASSOCIATES.

CERTIFICATE OF ENGINEER

I HEREBY CERTIFY THAT THE SUBDIVISION SHOWN ON THIS MAP IS MADE FROM A TRUE AND COMPLETE SURVEY MADE UNDER MY DIRECTION IN MARCH, 1977 THAT THE MONUMENTS WILL BE OF THE CHARACTER AND OCCUPY THE POSITIONS INDICATED AND WILL BE SET IN SUCH POSITIONS IN ACCORDANCE WITH THE SATISFACTORY ASSURANCE GIVEN BY THE SUBDIVIDER ON OR BEFORE OCTOBER, 1979, AND THAT SAID MONUMENTS WILL BE SUFFICIENT TO ENABLE THE SURVEY TO BE RETRACED.

DATED THIS 11th DAY OF April, 1978.



Richard W. Karn, R.C.E. NO. 8658

CERTIFICATE OF OWNERS

THE UNDERSIGNED ARAYMOND KALISKI, MARTELL J. KALISKI, AND LOUIS KALISKI, INC., A CALIFORNIA CORPORATION, HEREINAFTER REFERRED TO AS "OWNERS", DO HEREBY CERTIFY THAT THEY ARE THE OWNERS OF ALL THE LANDS DELINEATED AND EMBRACED WITHIN THE EXTERIOR BOUNDARY LINES UPON THE HEREIN EMBODIED FINAL MAP ENTITLED, "TRACT 3883, CROWN HARBOR, CITY OF ALAMEDA, COUNTY OF ALAMEDA, CALIFORNIA", CONSISTING OF 72 SHEETS, THIS CERTIFICATE BEING UPON SHEET 1 THEREOF; THAT THEY HAVE CAUSED SAID MAP TO BE PREPARED FOR RECORD AND DO CONSENT TO THE PREPARATION AND RECORDATION OF SAID MAP; THAT SAID MAP PARTICULARLY SETS FORTH AND DESCRIBES ALL UNITS BY THEIR PRECISE WIDTH, LENGTH AND ELEVATIONS; THAT SAID MAP PARTICULARLY SETS FORTH AND DESCRIBES ALL PARCELS OF LAND RESERVED FOR PUBLIC PURPOSES BY THEIR BOUNDARIES, COURSES AND EXTENT; THE SAID PARCELS SO RESERVED ARE FOR THE PURPOSES DESIGNATED ON SAID MAP.

AND SAID OWNERS DO HEREBY DEDICATE TO THE CITY OF ALAMEDA THE CERTAIN STRIP OF LAND DESIGNATED AS "BICYCLE PATH", UPON AND EMBRACED WITHIN THE EXTERIOR BOUNDARY LINES OF THE HEREIN EMBODIED MAP.

AND SAID OWNERS DO HEREBY DEDICATE TO THE CITY OF ALAMEDA THE RIGHTS OF ACCESS OVER LOTS 77 AND 78, AND THE STRIP OF LAND DESIGNATED "BICYCLE PATH" FOR OPERATIONS OF PUBLIC SAFETY VEHICLES AND EMERGENCY EQUIPMENT.

AND SAID OWNERS HEREBY DEDICATE TO THE PUBLIC EASEMENTS FOR PUBLIC UTILITIES AND THEIR APPURTENANCES AND THE RIGHT TO CONSTRUCT, MAINTAIN AND REPLACE SUCH UTILITIES AND THEIR APPURTENANCES UNDER, ON AND OVER THE STRIPS OR PARCELS OF LAND DESIGNATED, "PUBLIC UTILITIES EASEMENT" (P.U.E.) AND "STORM DRAIN EASEMENT" (S.D.E.).

AND SAID OWNERS DO HEREBY ESTABLISH LOTS 77 AND 78 AS PRIVATE COMMON AREA FOR USE AND BENEFIT OF THE OWNERS OF THE UNITS OF TRACT 3883.

AND SAID OWNERS DO HEREBY RESERVE LOT 77 AND 78 AS EASEMENTS IN GROSS FOR INSTALLATION, CONSTRUCTION, RECONSTRUCTION, MAINTENANCE, REPAIR, OPERATION AND USE AS PRIVATE ROADWAYS, SANITARY SEWERS, STORM DRAINS, WATER LINES, ELECTRICAL CONDUIT, TELEPHONE CONDUIT, T.V. CONDUIT, LANDSCAPING AND IRRIGATION SYSTEMS AND APPURTENANCES NECESSARY TO ANY AND ALL THEREOF.

NO TREES OR PERMANENT STRUCTURES SHALL BE PLACED WITHIN THE DISTANCES MEASURED HORIZONTALLY FROM THE OUTSIDE FACE OF THE UNDERGROUND LINES AS TABULATED BELOW:

FIVE FEET - STORM MAINS OR LATERALS, SANITARY MAINS OR LATERALS, GAS MAINS OR SERVICES, WATER MAINS, POWER MAIN CONDUITS, TELEPHONE MAIN CONDUITS

TWO FEET - WATER SERVICES, POWER SERVICES, TELEPHONE SERVICES

IN WITNESS WHEREOF, SAID OWNERS HAVE CAUSED THIS CERTIFICATION AND THESE DEDICATIONS TO BE EXECUTED THIS 12th DAY OF April, 1978.

SAID OWNERS ADVISED THAT THE PROPERTY HEREIN BY DEED RECORDED JUNE 1, 1978, SERIES AB-12189, REEL 5420 OR, IMAGE 196.

OWNERS: 'LOUIS KALISKI, INC., A CALIFORNIA CORPORATION

BY Raymond Kaliski, Martell J. Kaliski

RAYMOND KALISKI, MARTELL J. KALISKI

BY Raymond Kaliski, Martella Kaliski

TRUSTEE: AMERICAN SECURITIES COMPANY

BY [Signature]

AE REALTY PARTNERS, A GENERAL PARTNERSHIP

ACTVA LIFE INSURANCE COMPANY, A CONNECTICUT CORPORATION, GENERAL PARTNER

BY Richard Ewin, RICHARD EWIN, DULY AUTHORIZED AGENT

AE DEVELOPMENT GROUP, INC., A CONNECTICUT CORPORATION, GENERAL PARTNER

BY Richard Ewin, RICHARD EWIN, DULY AUTHORIZED AGENT

STATE OF CALIFORNIA } COUNTY OF ALAMEDA } SS

ON THIS 12th DAY OF April, 1978, BEFORE ME,

PERSONALLY APPEARED DONNA J. MOSHER, A NOTARY PUBLIC IN AND FOR SAID STATE, KNOWN TO ME TO BE THE DULY AUTHORIZED AGENT FOR BOTH THE GENERAL PARTNERS, ACTVA LIFE INSURANCE COMPANY AND AE DEVELOPMENT GROUP, INC. OF THE PARTNERSHIP THAT EXECUTED THE WITHIN INSTRUMENT AND ACKNOWLEDGED TO ME THAT SUCH PARTNERSHIP EXECUTED THE SAME.

IN WITNESS WHEREOF, I HAVE HEREUNTO SET MY HAND THIS 12th DAY OF April, 1978.

Donna J. Mosher, NOTARY PUBLIC IN AND FOR THE COUNTY OF ALAMEDA, STATE OF CALIFORNIA

MY COMMISSION EXPIRES 10-29-79

Donna J. Mosher, NOTARY PUBLIC IN AND FOR THE COUNTY OF ALAMEDA, STATE OF CALIFORNIA

MY COMMISSION EXPIRES 10-29-79

Donna J. Mosher, NOTARY PUBLIC IN AND FOR THE COUNTY OF ALAMEDA, STATE OF CALIFORNIA

MY COMMISSION EXPIRES 10-29-79

Donna J. Mosher, NOTARY PUBLIC IN AND FOR THE COUNTY OF ALAMEDA, STATE OF CALIFORNIA

MY COMMISSION EXPIRES 10-29-79

STATE OF CALIFORNIA } COUNTY OF ALAMEDA } SS

ON THIS 12th DAY OF April, 1978, BEFORE ME,

PERSONALLY APPEARED Raymond Kaliski, (VICE) PRESIDENT AND MARTELL J. KALISKI, KNOWN TO ME TO BE THE (ASSISTANT) SECRETARY OF LOUIS KALISKI, INC., THE CORPORATION THAT EXECUTED THE WITHIN INSTRUMENT AND KNOWN TO ME TO BE THE PERSONS WHO EXECUTED THE WITHIN INSTRUMENT ON BEHALF OF THE CORPORATION HEREIN NAMED AND ACKNOWLEDGED TO ME THAT SUCH CORPORATION EXECUTED THE SAME.

IN WITNESS WHEREOF, I HAVE HEREUNTO SET MY HAND THIS 12th DAY OF April, 1978.

Donna J. Mosher, NOTARY PUBLIC IN AND FOR THE COUNTY OF ALAMEDA, STATE OF CALIFORNIA

MY COMMISSION EXPIRES 10-29-79

Donna J. Mosher, NOTARY PUBLIC IN AND FOR THE COUNTY OF ALAMEDA, STATE OF CALIFORNIA

MY COMMISSION EXPIRES 10-29-79

Donna J. Mosher, NOTARY PUBLIC IN AND FOR THE COUNTY OF ALAMEDA, STATE OF CALIFORNIA

MY COMMISSION EXPIRES 10-29-79

Donna J. Mosher, NOTARY PUBLIC IN AND FOR THE COUNTY OF ALAMEDA, STATE OF CALIFORNIA

MY COMMISSION EXPIRES 10-29-79

Donna J. Mosher, NOTARY PUBLIC IN AND FOR THE COUNTY OF ALAMEDA, STATE OF CALIFORNIA

MY COMMISSION EXPIRES 10-29-79

Donna J. Mosher, NOTARY PUBLIC IN AND FOR THE COUNTY OF ALAMEDA, STATE OF CALIFORNIA

MY COMMISSION EXPIRES 10-29-79

Donna J. Mosher, NOTARY PUBLIC IN AND FOR THE COUNTY OF ALAMEDA, STATE OF CALIFORNIA

MY COMMISSION EXPIRES 10-29-79

Donna J. Mosher, NOTARY PUBLIC IN AND FOR THE COUNTY OF ALAMEDA, STATE OF CALIFORNIA

MY COMMISSION EXPIRES 10-29-79

Donna J. Mosher, NOTARY PUBLIC IN AND FOR THE COUNTY OF ALAMEDA, STATE OF CALIFORNIA

MY COMMISSION EXPIRES 10-29-79

Donna J. Mosher, NOTARY PUBLIC IN AND FOR THE COUNTY OF ALAMEDA, STATE OF CALIFORNIA

MY COMMISSION EXPIRES 10-29-79

Donna J. Mosher, NOTARY PUBLIC IN AND FOR THE COUNTY OF ALAMEDA, STATE OF CALIFORNIA

MY COMMISSION EXPIRES 10-29-79

Donna J. Mosher, NOTARY PUBLIC IN AND FOR THE COUNTY OF ALAMEDA, STATE OF CALIFORNIA

MY COMMISSION EXPIRES 10-29-79

Donna J. Mosher, NOTARY PUBLIC IN AND FOR THE COUNTY OF ALAMEDA, STATE OF CALIFORNIA

MY COMMISSION EXPIRES 10-29-79

Donna J. Mosher, NOTARY PUBLIC IN AND FOR THE COUNTY OF ALAMEDA, STATE OF CALIFORNIA

MY COMMISSION EXPIRES 10-29-79

Donna J. Mosher, NOTARY PUBLIC IN AND FOR THE COUNTY OF ALAMEDA, STATE OF CALIFORNIA

MY COMMISSION EXPIRES 10-29-79

Donna J. Mosher, NOTARY PUBLIC IN AND FOR THE COUNTY OF ALAMEDA, STATE OF CALIFORNIA

MY COMMISSION EXPIRES 10-29-79

Donna J. Mosher, NOTARY PUBLIC IN AND FOR THE COUNTY OF ALAMEDA, STATE OF CALIFORNIA

MY COMMISSION EXPIRES 10-29-79

Donna J. Mosher, NOTARY PUBLIC IN AND FOR THE COUNTY OF ALAMEDA, STATE OF CALIFORNIA

MY COMMISSION EXPIRES 10-29-79

Donna J. Mosher, NOTARY PUBLIC IN AND FOR THE COUNTY OF ALAMEDA, STATE OF CALIFORNIA

MY COMMISSION EXPIRES 10-29-79

CERTIFICATE OF CITY CLERK

I, ETHEL M. OTTOSEN, CITY CLERK AND CLERK OF THE COUNCIL OF THE CITY OF ALAMEDA, STATE OF CALIFORNIA, DO HEREBY CERTIFY THAT THE HEREIN EMBODIED FINAL MAP ENTITLED, "TRACT 3883, CROWN HARBOR, CITY OF ALAMEDA, ALAMEDA COUNTY, CALIFORNIA" WAS PRESENTED TO THE CITY COUNCIL OF THE CITY OF ALAMEDA AT A MEETING THEREOF HELD ON THE 20th DAY OF May, 1978, BY RESOLUTION NO. 8895, APPROVE SAID MAP, ACCEPT ON BEHALF OF THE PUBLIC ALL EASEMENTS OFFERED FOR DEDICATION TO THE PUBLIC FOR USE IN CONFORMITY WITH THE TERMS OF THE OFFER OF DEDICATION, AND DID REJECT THE OFFER OF DEDICATION OF THAT PARCEL OF LAND DESIGNATED AS "BICYCLE PATH" ON THE HEREIN EMBODIED MAP.

IN WITNESS WHEREOF, I HAVE HEREUNTO SET MY HAND THIS 4th DAY OF May, 1978.

Ethel M. Ottosen, CITY CLERK AND CLERK OF THE COUNCIL OF THE CITY OF ALAMEDA, CALIFORNIA

CERTIFICATE OF CITY ENGINEER

I, MARK J. HANNA, SUPERINTENDENT OF STREETS AND CITY ENGINEER OF THE CITY OF ALAMEDA, STATE OF CALIFORNIA, DO HEREBY CERTIFY THAT I HAVE EXAMINED THE HEREIN EMBODIED FINAL MAP ENTITLED, "TRACT 3883, CROWN HARBOR, CITY OF ALAMEDA, ALAMEDA COUNTY, CALIFORNIA"; THAT THE SUBDIVISION SHOWN THEREON IS SUBSTANTIALLY THE SAME AS APPEARING ON THE ALTERATION OF THE TENTATIVE MAP OF TRACT 3883 APPROVED BY THE CITY COUNCIL ON THE 15th DAY OF NOVEMBER, 1977, THAT SAID FINAL MAP COMPLIES WITH ALL THE PROVISIONS OF THE SUBDIVISION MAP ACT, AND OF LOCAL ORDINANCES APPLICABLE AT THIS TIME, AND THAT I AM SATISFIED THAT SAID FINAL MAP IS TECHNICALLY CORRECT.

IN WITNESS WHEREOF, I HAVE HEREUNTO SET MY HAND THIS 19th DAY OF April, 1978.

Mark J. Hanna, REGISTERED CIVIL ENGINEER NO. 7061 SUPERINTENDENT OF STREETS AND CITY ENGINEER OF THE CITY OF ALAMEDA

CERTIFICATE OF CLERK, BOARD OF SUPERVISORS

I, JACK K. POOL, CLERK OF THE BOARD OF SUPERVISORS OF THE COUNTY OF ALAMEDA, STATE OF CALIFORNIA, DO HEREBY CERTIFY THAT A BOND HAS BEEN FILED WITH SAID BOARD IN THE AMOUNT OF \$ 1,624.20, CONDITIONED FOR PAYMENT OF ALL TAXES AND SPECIAL ASSESSMENTS COLLECTED AS TAXES WHICH ARE NOW A LIEN AGAINST THE LAND EMBRACED WITHIN THE EXTERIOR BOUNDARY LINES UPON THE HEREIN EMBODIED FINAL MAP OR ANY PORTION THEREOF BUT NOT YET PAYABLE.

IN WITNESS WHEREOF, I HAVE HEREUNTO SET MY HAND THIS 15th DAY OF June, 1978.

Jack K. Pool, CLERK OF THE BOARD OF SUPERVISORS OF THE COUNTY OF ALAMEDA, STATE OF CALIFORNIA

Shyllia Calamia, DEPUTY

CERTIFICATE OF COUNTY RECORDER

FILED THIS 16th DAY OF June, 1978 AT 10:30 A.M., RECORDER'S SERIES NUMBER 78-11433-103 OF MAPS AT PAGES 58-69 AT THE REQUEST OF WESTERN TITLE INSURANCE COMPANY.

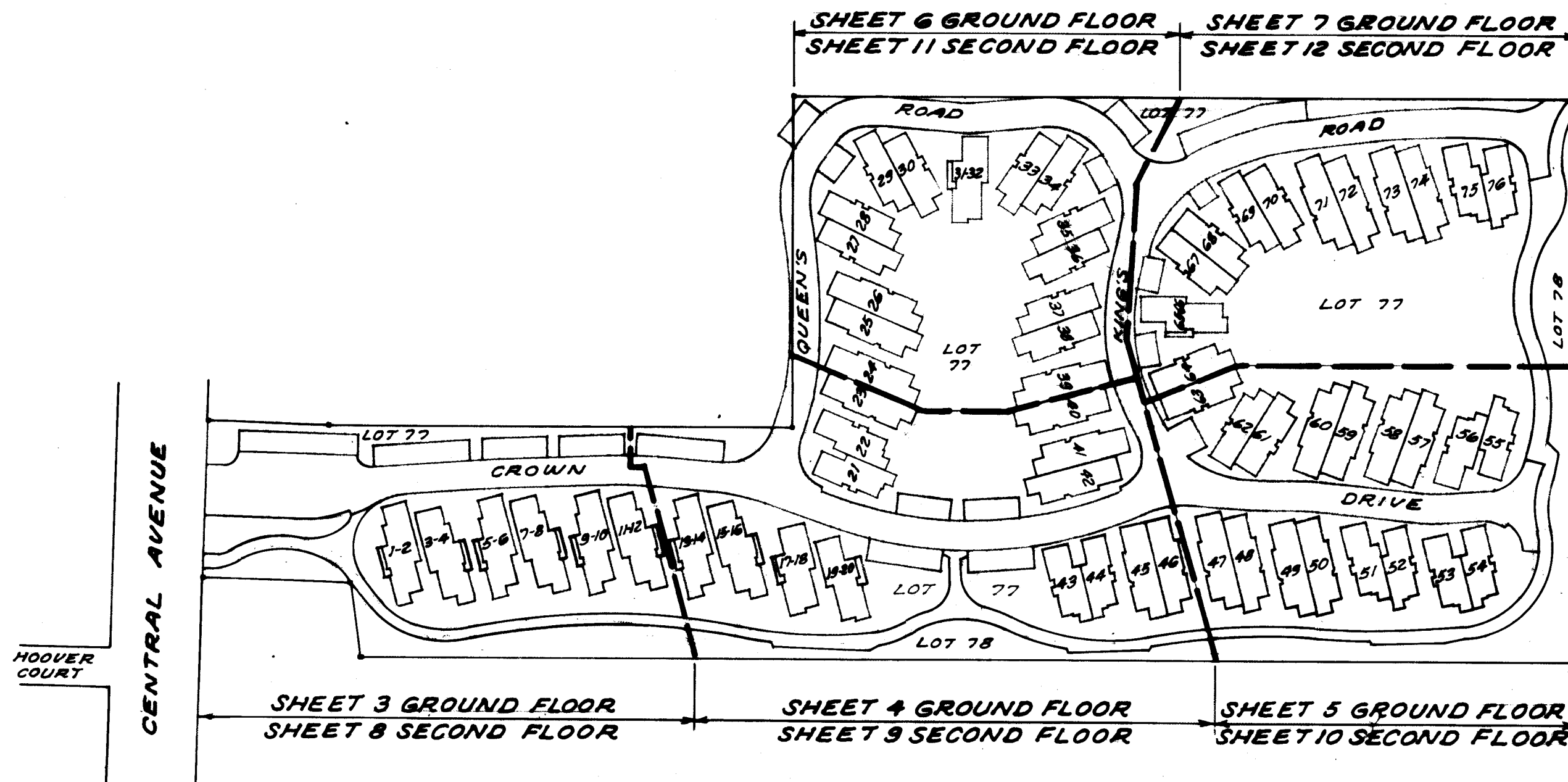
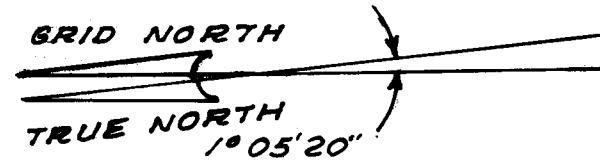
Reis C. Davidson, RENE' C. DAVIDSON, COUNTY RECORDER IN AND FOR THE COUNTY OF ALAMEDA, STATE OF CALIFORNIA

Shyllia Calamia, DEPUTY

TRACT 3883 CROWN HARBOR CITY OF ALAMEDA ALAMEDA COUNTY, CALIFORNIA BISSELL & KARN, INC. CIVIL ENGINEERS SAN LEANDRO JANUARY, 1978 18-11433-103 Sheet 1 of 12

7483-103

Man BK 103 Pa 50-10 103



LEGEND
TYPICAL UNIT

- 1 Unit number
- PS-1 Parking space
- G-1 Garage
- P-1 Patio
- B-1 Balcony
- U.F. Unfinished floor elevation
- U.C. Unfinished ceiling elevation

TRACT 3883
CROWN HARBOR
CITY OF ALAMEDA
ALAMEDA COUNTY, CALIFORNIA

BISSELL & KARN, INC.
CIVIL ENGINEERS SAN LEANDRO
SCALE: 1" = 100' JANUARY, 1978
0 50 100 200 300 400 FEET
GRAPHIC SCALE

78-44334

8-114334

Sheet 2 of 12

7483-103 #6328

COPY
103/59

GRID NORTH
TRUE NORTH
1° 05' 20"

SEE DETAIL "A" DETAIL "A
No scale

FILINICK

U.S.G.S. Mon. "CENT-SIXTH"
467,892.61
1,485,979.13

467,920.13
1,485,539.53

CENTRAL AVENUE

N 87° 04' 05" W 13.02' M. TO M.

HOOVER COURT



NOTES:

- Bearings, distances and coordinates shown upon this map conform with the California Coordinate System, Zone 3. Ground distance x 0.9999292 = Grid distance. Angular difference at U.S.C. & G.S. monument, "CENT-SIXTH" = 1° 05' 20".
- The bearing North 87° 04' 05" West of the monument line on Central Avenue connecting the U.S.C. & G.S. monuments "CENT-SIXTH" and "CENT-FIFTH" is the basis of bearings for this map.
- The Soils Report for TRACT 3883 was prepared on June 14, 1977, by Hallenbeck, McKay and Assoc.
- Sanitary and storm sewer lines lying within the general common area and outside of special sewer easements are the property of the Home Owners Association and are not public sanitary or storm lines.

LEGEND:

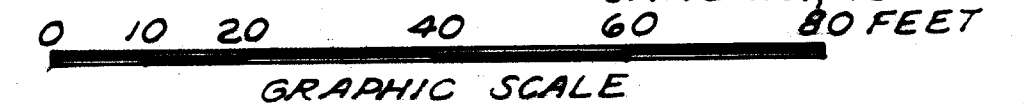
- Existing U.S.C. & G.S. monument
- Set City monument
- Existing cross
- Existing 3" iron pipe, R.C.E. 9821
- Existing Department of Parks and Recreation brass disc
- Set railroad spike

	RADIUS	DELTA	LENGTH	BEARING	DISTANCE
1	30.00'	34° 02' 42"	17.83'	A N 2° 50' 13" E	3.00'
2	40.00'	34° 02' 42"	23.77'	B N 74° 24' 07" E	12.65'
3	40.00'	61° 39' 45"	43.05'	C N 2° 50' 13" E	5.00'
4	5.00'	58° 43' 07"	5.12'	D N 42° 09' 47" W	2.83'
5	129.00'	11° 40' 25"	26.28'	E N 52° 39' 16" E	3.95'
6	60.00'	35° 16' 03"	36.93'	F N 52° 39' 16" E	27.12'
				G N 52° 39' 16" E	23.02'

TRACT 3883
CROWN HARBOR
CITY OF ALAMEDA
ALAMEDA COUNTY, CALIFORNIA

BISSELL & KARN, INC.

CIVIL ENGINEERS SAN LEANDRO JANUARY, 1978
SCALE: 1" = 20'



78-114334 B-114334

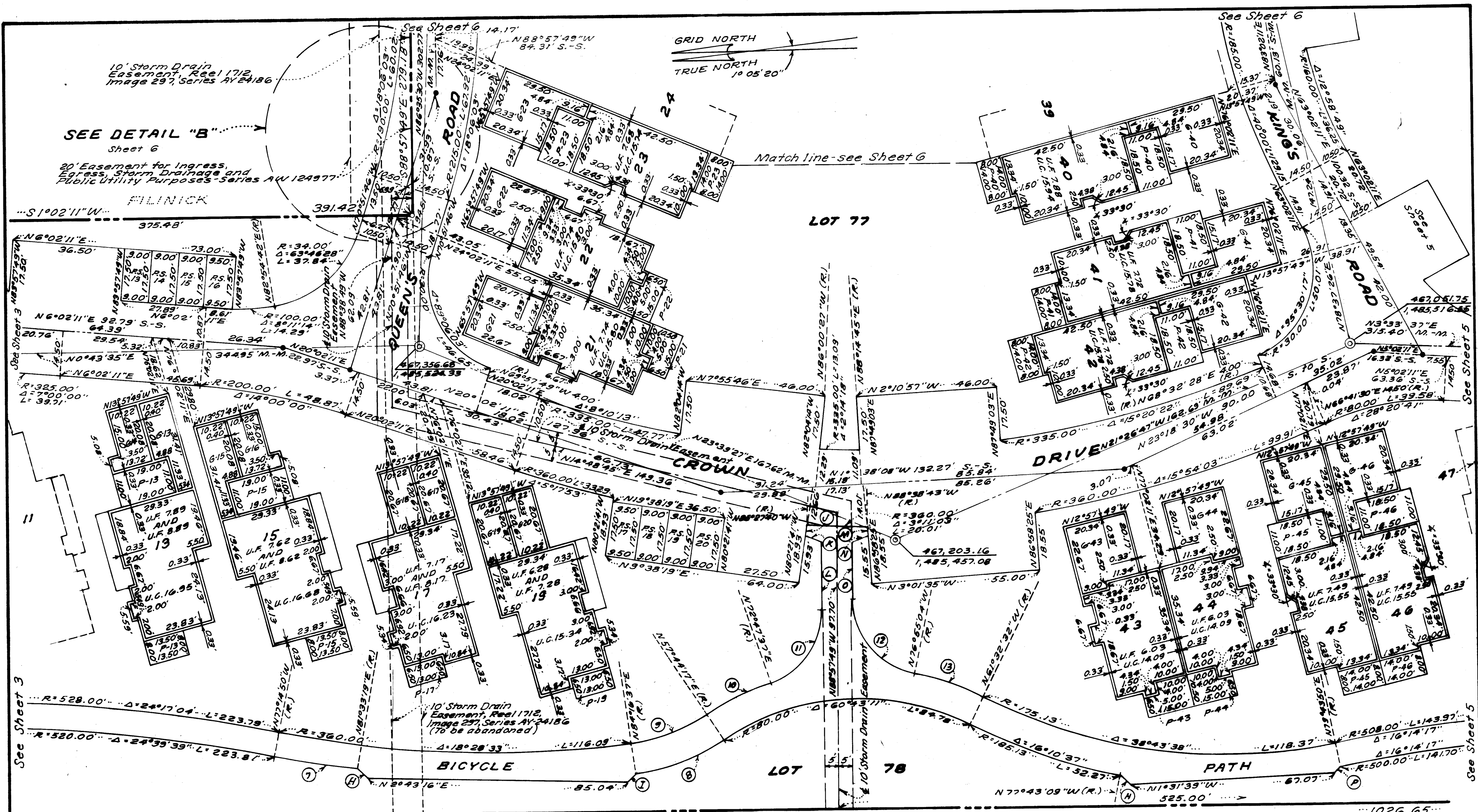
GRAPHIC SCALE
Sheet 3 of 12

U.S.G.S. Mon. "CENT-FIFTH"
467,941.25
1,485,127.09

7483-103 #6328

See Sheet 4

copy
103/100



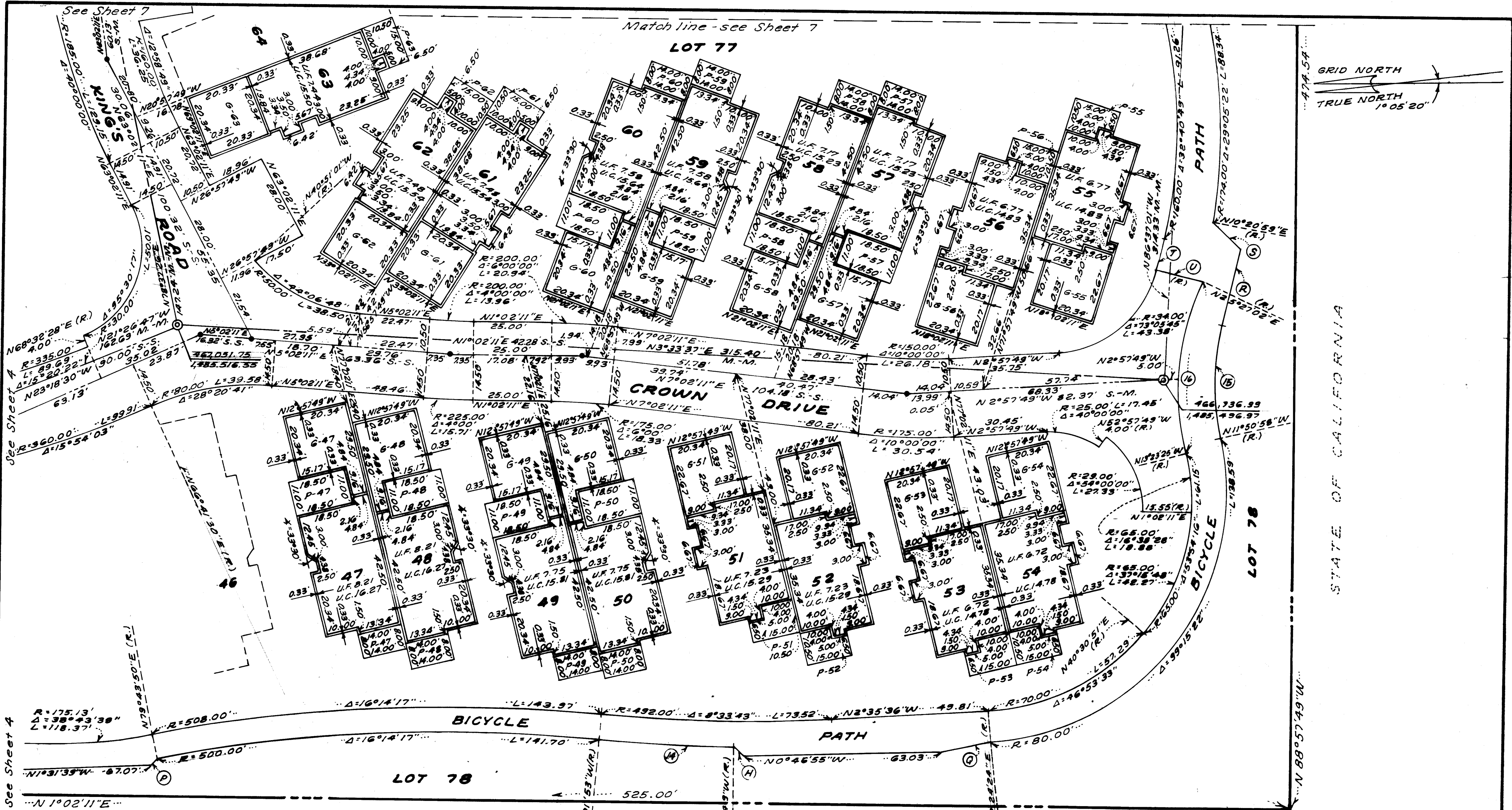
BICYCLE PATH RIGHT-OF-WAY

	RADIUS	DELTA	LENGTH	BEARING	DISTANCE
7	368.00'	4°18'29"	27.67'	H N46°02'11"E	4.24'
8	67.42'	26°32'20"	31.23'	J N43°57'49"W	4.24'
9	57.42'	26°32'20"	26.60'	J N80°21'41"W	3.00'
10	90.00'	15°03'20"	23.65'	K N23°53'16"E	5.91'
11	25.00'	71°45'26"	31.31'	L N88°57'49"W	21.95'
12	25.00'	77°57'15"	34.01'	M N86°58'25"E	3.00'
13	90.00'	15°22'32"	24.15'	N N13°25'30"W	5.56'
				O N88°57'49"W	18.37'
				P N43°57'49"W	2.83'

STATE OF CALIFORNIA

TRACT 3883
CROWN HARBOR
CITY OF ALAMEDA
ALAMEDA COUNTY, CALIFORNIA

BISSELL & KARN, INC.
 CIVIL ENGINEERS SAN LEANDRO
 SCALE: 1" = 20' JANUARY, 1978
 0 10 20 40 80 FEET
 GRAPHIC SCALE
 78-114334 -1-133
 Sheet 4 of 12



BICYCLE PATH RIGHT-OF-WAY

RADIUS	DELTA	LENGTH	BEARING	DISTANCE
500.00'	4°55'56"	43.04'	N46°02'11"E	4.24'
80.00'	25°47'24"	36.01'	N43°57'49"W	2.83'
82.25'	38°50'27"	55.76'	N10°29'51"W	15.81'
			N76°03'34"W	25.17'
			N43°56'26"E	12.52'
			N76°03'34"W	8.36'
			N13°56'26"E	15.13'

STATE OF CALIFORNIA

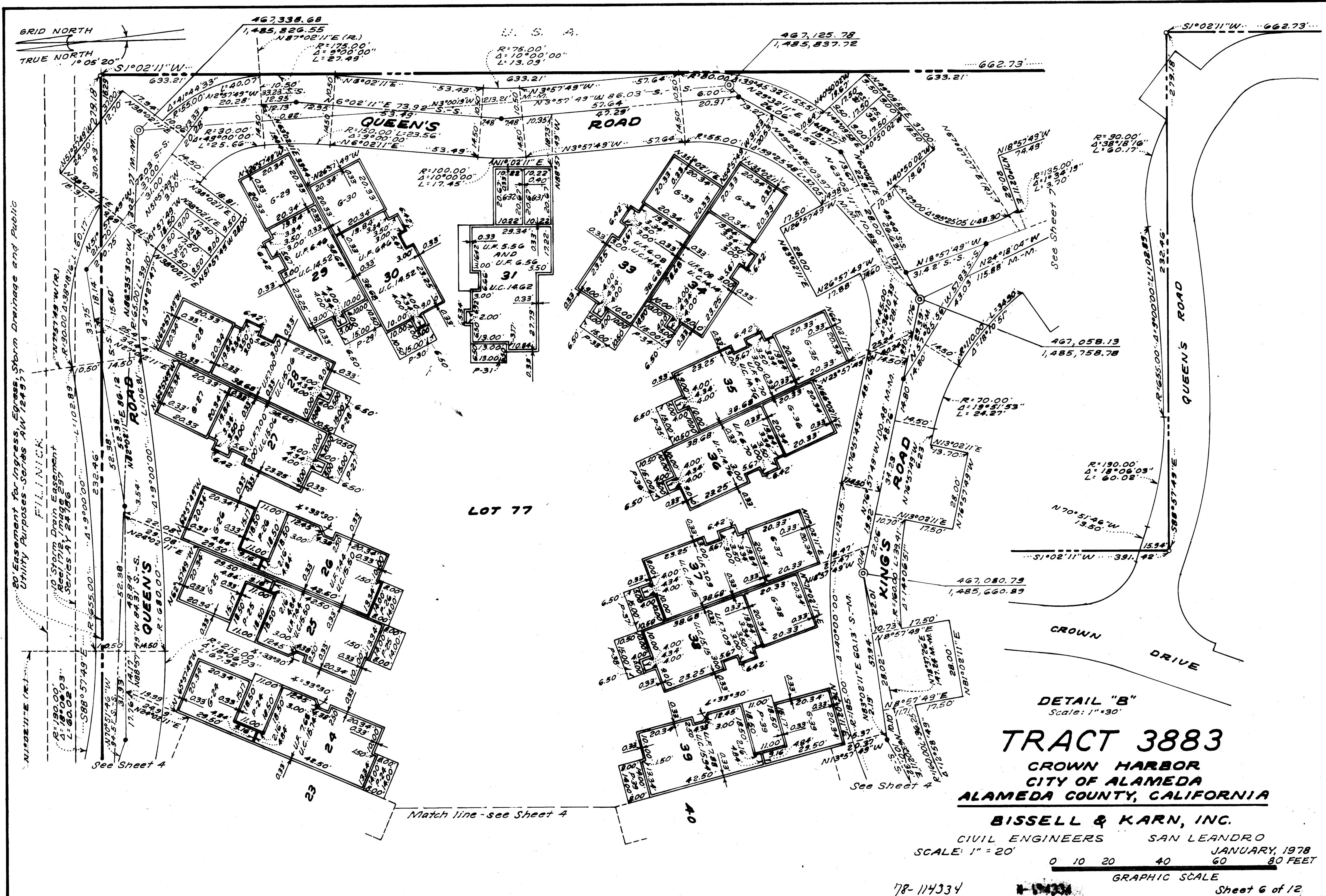
TRACT 3883
CROWN HARBOR
CITY OF ALAMEDA
ALAMEDA COUNTY, CALIFORNIA

BISSELL & KARN, INC.
 CIVIL ENGINEERS SAN LEANDRO
 SCALE: 1" = 20'
 JANUARY, 1978
 GRAPHIC SCALE
 Sheet 5 of 12

78-114334

7183-103

copy 103/102



DETAIL "B"
 Scale: 1"=30'
TRACT 3883
 CROWN HARBOR
 CITY OF ALAMEDA
 ALAMEDA COUNTY, CALIFORNIA

BISSELL & KARN, INC.
 CIVIL ENGINEERS SAN LEANDRO
 SCALE: 1" = 20' JANUARY, 1978
 0 10 20 40 60 80 FEET
 GRAPHIC SCALE

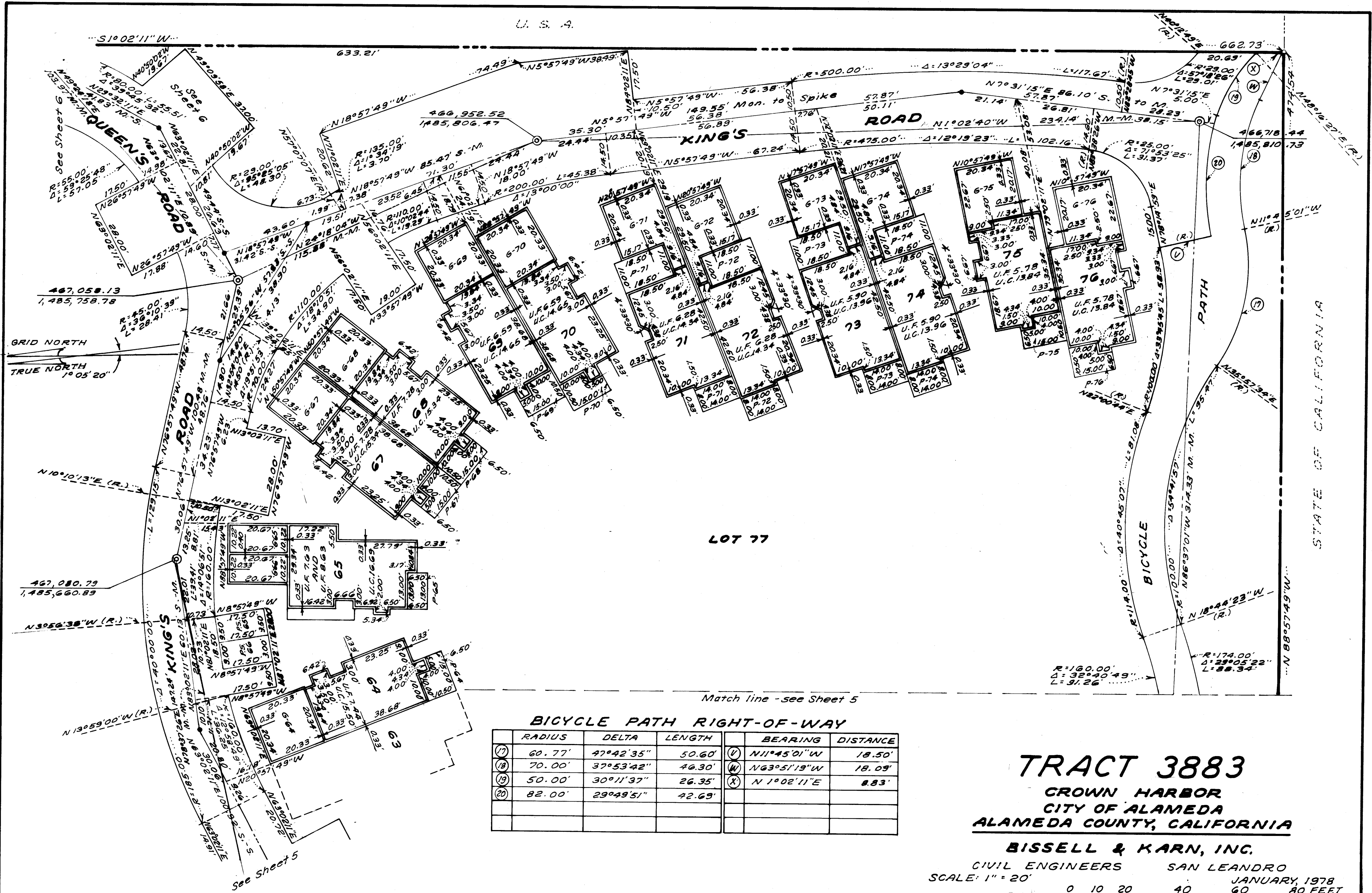
78-114334

Sheet 6 of 12

7483-103

#6328

COPY 103/103



LOT 77

Match line - see Sheet 5

BICYCLE PATH RIGHT-OF-WAY

	RADIUS	DELTA	LENGTH	BEARING	DISTANCE
(17)	60.77'	47°42'35"	50.60'	N11°45'01"W	18.50'
(18)	70.00'	37°53'42"	46.30'	N63°51'19"W	18.09'
(19)	50.00'	30°11'37"	26.35'	N1°02'11"E	8.83'
(20)	82.00'	29°49'51"	42.69'		

TRACT 3883
CROWN HARBOR
CITY OF ALAMEDA
ALAMEDA COUNTY, CALIFORNIA

BISSELL & KARN, INC.
 CIVIL ENGINEERS SAN LEANDRO
 SCALE: 1" = 20'
 JANUARY, 1978
 0 10 20 40 60 80 FEET
 GRAPHIC SCALE

78-114334

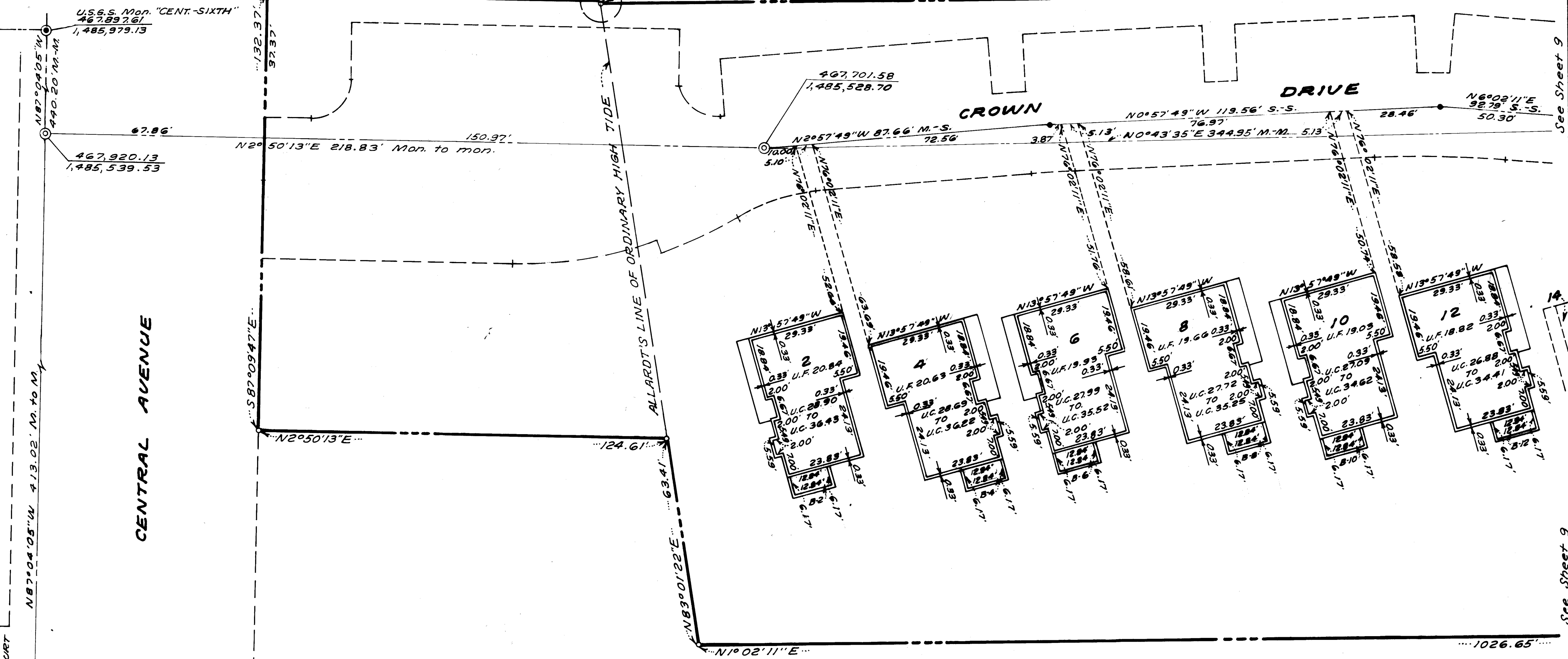
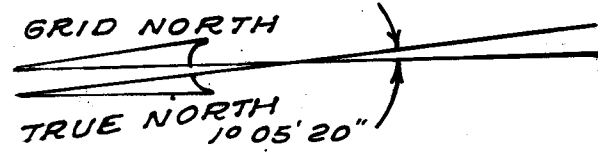
114334

Sheet 7 of 12

7183-103

COPY

103/104



TRACT 3883
CROWN HARBOR
CITY OF ALAMEDA
ALAMEDA COUNTY, CALIFORNIA

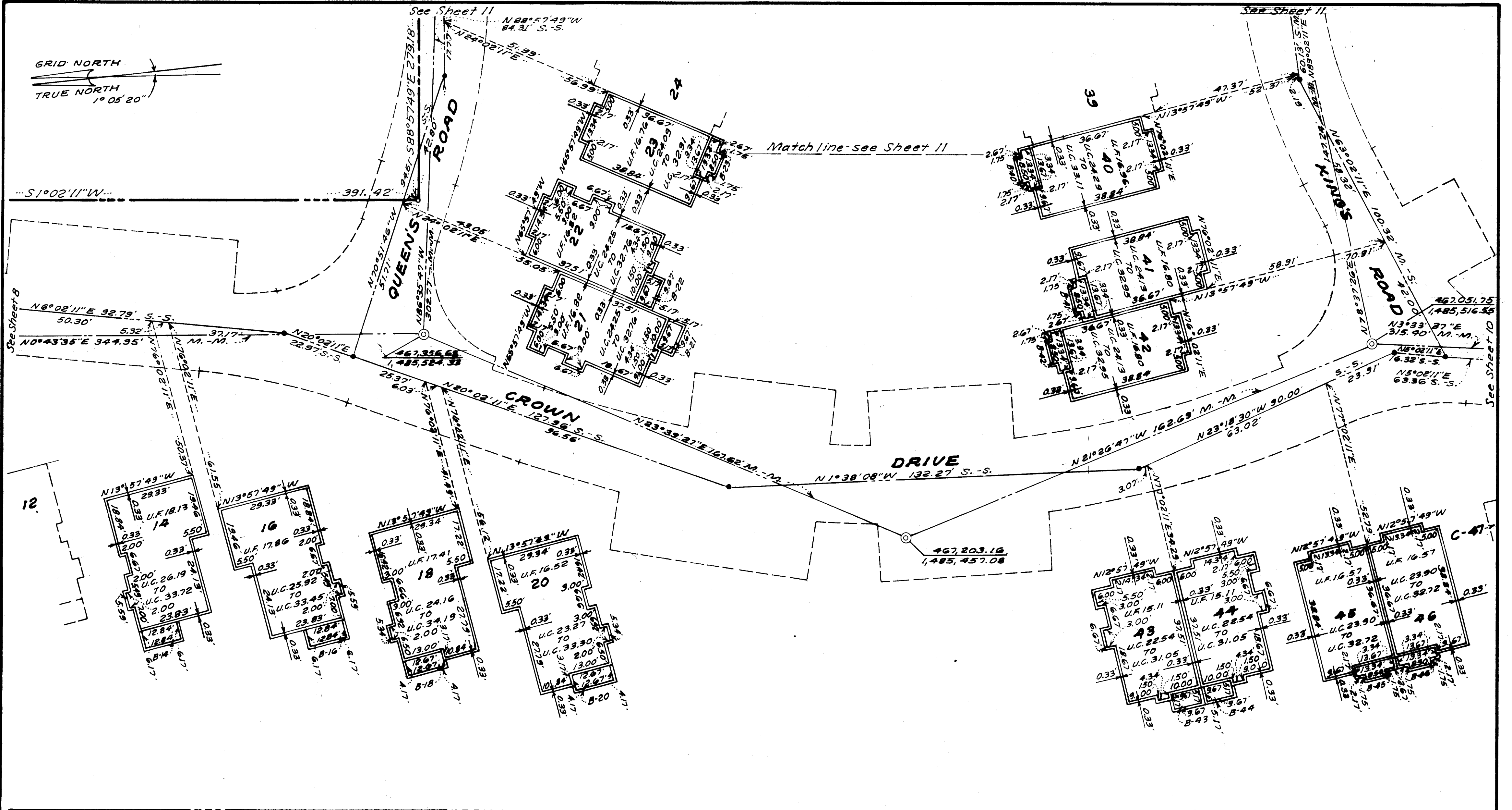
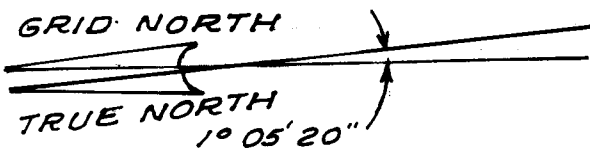
BISSELL & KARN, INC.
 CIVIL ENGINEERS SAN LEANDRO
 SCALE: 1" = 20' 0 10 20 40 60 80 FEET
 JANUARY 1978

78-114334 7-14334 GRAPHIC SCALE Sheet 8 of 12

7483-103

See Sheet 9

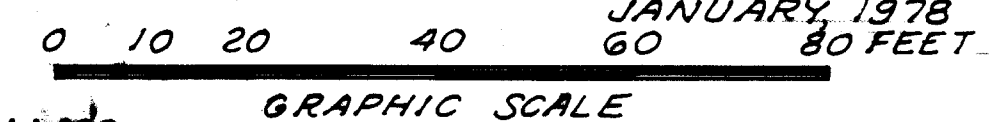
copy 103/105



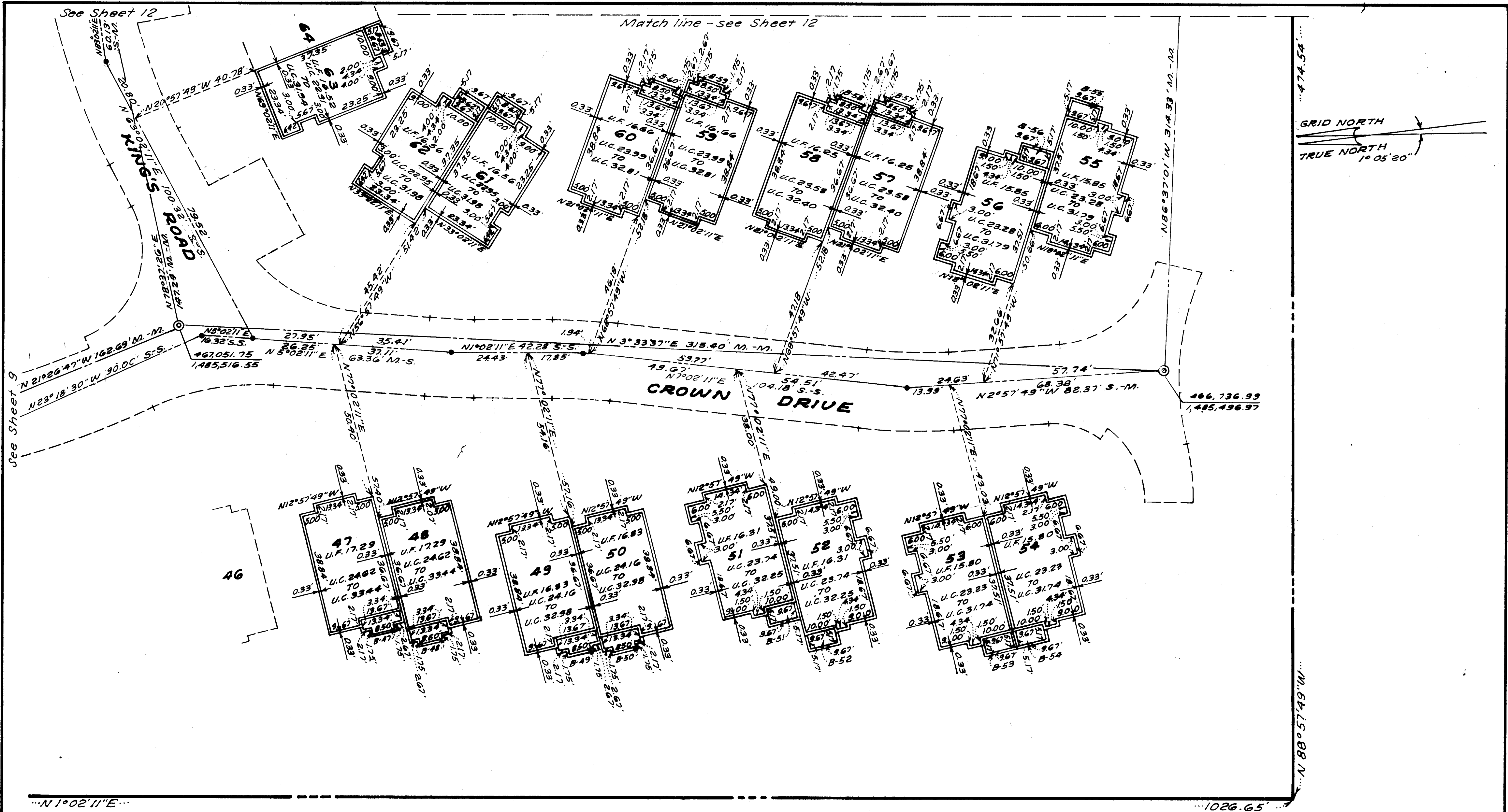
...N 1°02'11"E...

TRACT 3883
CROWN HARBOR
CITY OF ALAMEDA
ALAMEDA COUNTY, CALIFORNIA

BISSELL & KARN, INC.
 CIVIL ENGINEERS SAN LEANDRO
 SCALE: 1" = 20' JANUARY, 1978



copy 103/66



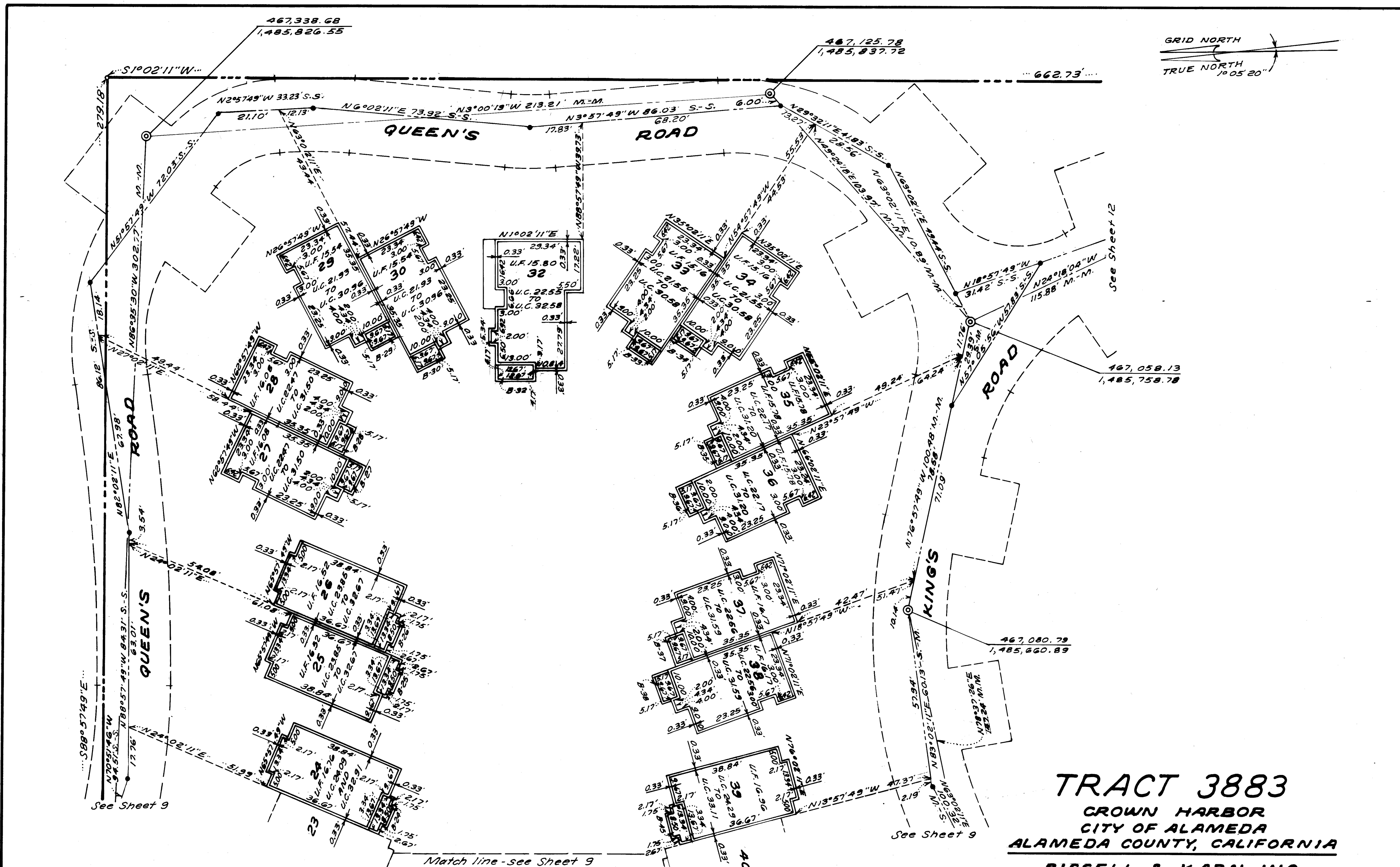
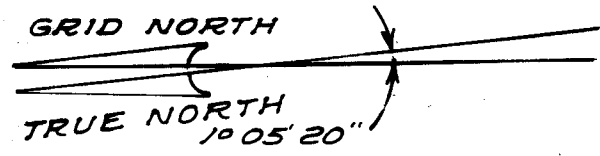
TRACT 3883
CROWN HARBOR
CITY OF ALAMEDA
ALAMEDA COUNTY, CALIFORNIA

BISSELL & KARN, INC.
 CIVIL ENGINEERS SAN LEANDRO
 SCALE: 1" = 20' 0 10 20 40 60 80 FEET
 GRAPHIC SCALE

98-114334 E-114334 Sheet 10 of 12

7483-103

COPY
103/67



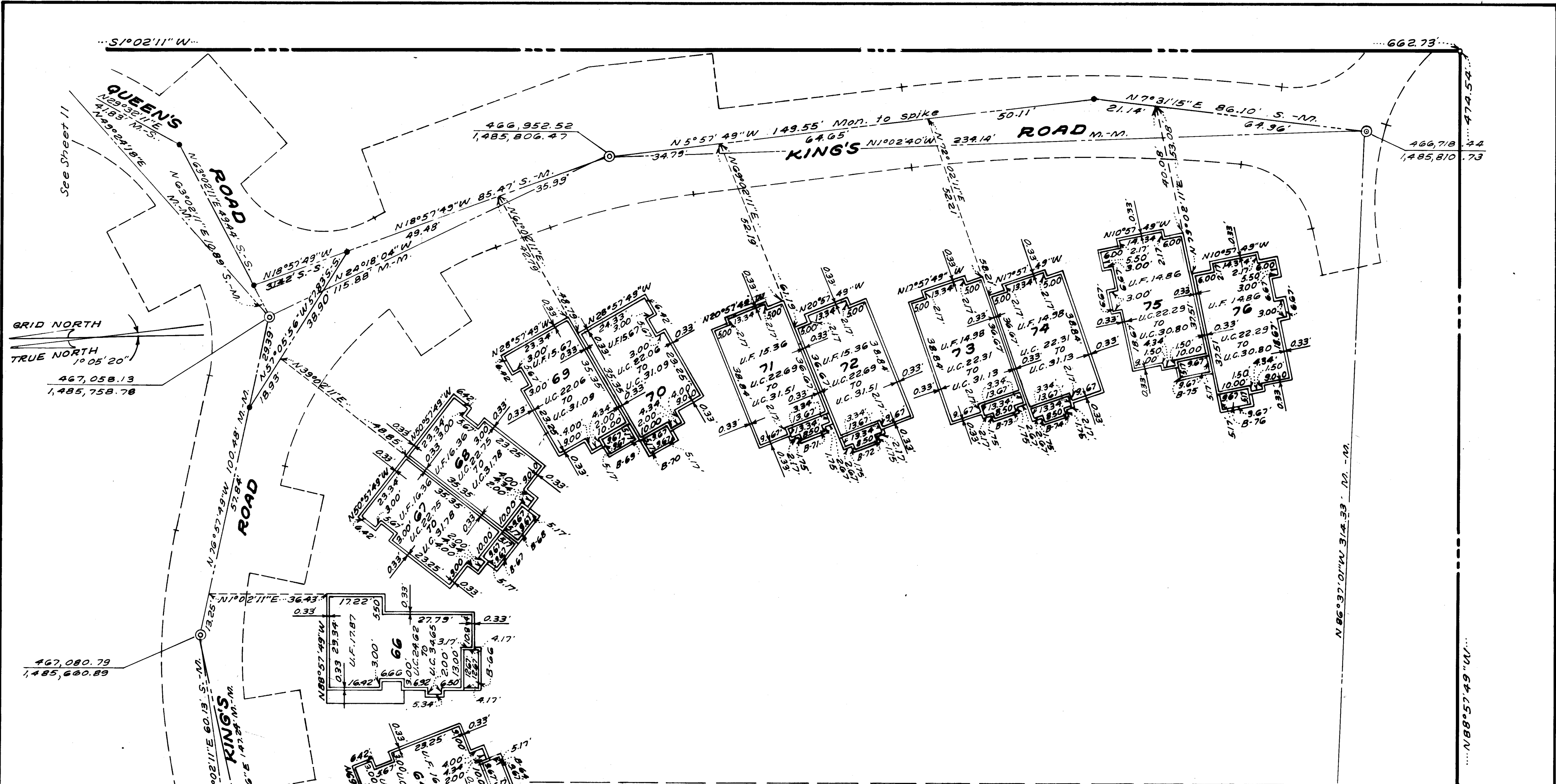
TRACT 3883
CROWN HARBOR
CITY OF ALAMEDA
ALAMEDA COUNTY, CALIFORNIA

BISSELL & KARN, INC.
 CIVIL ENGINEERS SAN LEANDRO
 SCALE: 1" = 20' 0 10 20 40 60 80 FEET
 JANUARY, 1978

78-114334 114334 GRAPHIC SCALE Sheet 11 of 12

7483-103

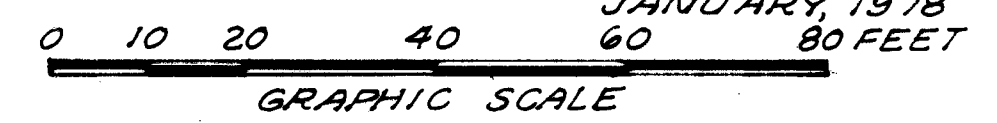
COPY
103/108



Match line - see Sheet 10

TRACT 3883
CROWN HARBOR
CITY OF ALAMEDA
ALAMEDA COUNTY, CALIFORNIA

BISSELL & KARN, INC.
 CIVIL ENGINEERS SAN LEANDRO
 SCALE: 1" = 20' JANUARY, 1978



78-114334
 78-114334
 Sheet 12 of 12

7483-103

copy
 103/69